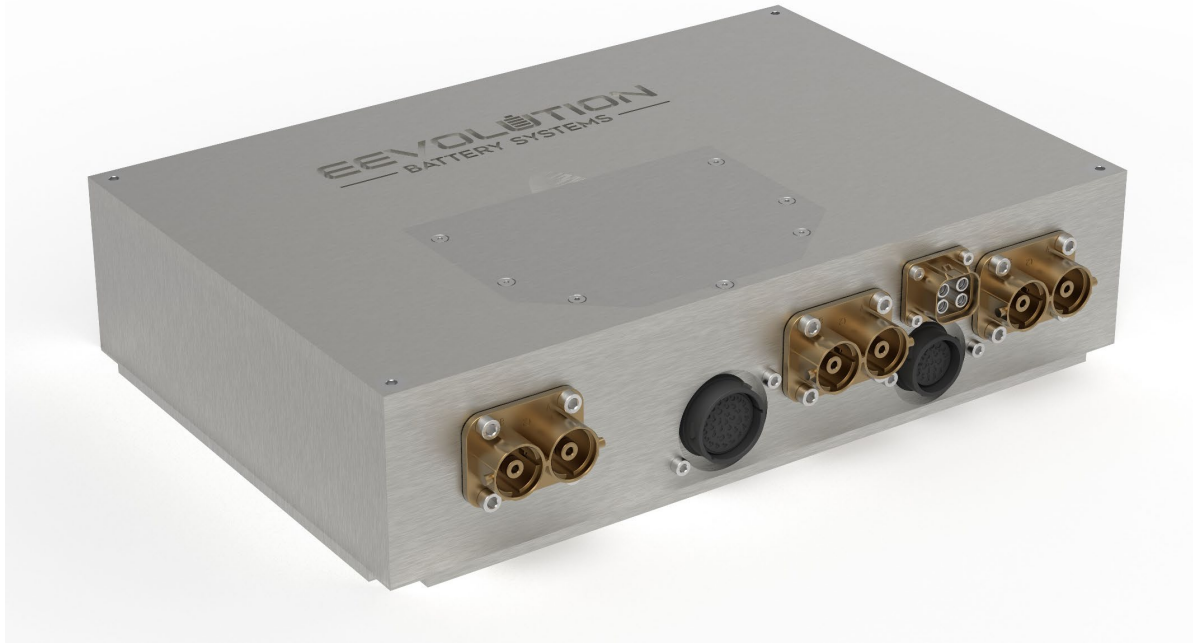


## HVPDU Universal High Voltage Power Distribution Unit



Specification			
Voltage Range:	24 to 800VDC	Mass:	23kg
Auxiliary Supply:	40A Fused	Dimensions (L x W x H):	300mm x 450mm x 106mm
Max Cont. Discharge Current:	250A Fused	Standard AC Charge Rate:	60A Fused
Max Peak Discharge Current:	600A Fused	Max CCS Charge Rate:	250A Fused

Hardware included in the HVPDU: Master BMS, Main Positive & Negative Contactors with Pre-Charge & Active Discharge, CCS Contactors with Aux Contacts and Current & Voltage Measurement, All Outputs Fused, Isolation Monitoring, and Battery and Vehicle level High Voltage Interlock Circuit (HVIL).

Software Control: Continuous Safety Monitor, Contactor Control with Pre-Charge & Active Discharge, continuously updated Derate Strategy to ensure maximum performance, Coolant System Control, Advanced SoC and SoX functions.

EEvolution Battery Systems have developed a Universal High Voltage Power Distribution Unit to take full advantage of our modular battery solutions, to meet REG100 and a high level of safety. With our Liquid Cooled Next GEN NMC or Passive Cooled LFP battery modules, our Custom Of The Shelf solutions suit a wide variety of applications, from Bus & Truck, to Marine and Industrial Energy Storage. Ranging from 24V to 800V and capacity exceeding 100kWh's, to suit your requirements.